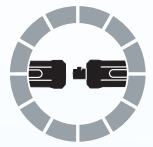




# PRODUCT CATALOGUE PLUGS & SOCKETS



2022





Copyright © 2022 DINSE G.m.b.H., Norderstedt.

Any type of copying, including translation, even as excerpts, is not permitted without the written consent of DINSE G.m.b.H.; this includes reproduction and the use of electronic systems for storage, processing or publication. All brands named in this catalogue are the property of their respective owners.

Conditions: For printing errors, we assume no liability. For our terms and conditions of delivery and sale, see [www.dinse.eu](http://www.dinse.eu)

Our terms and conditions apply to all orders and their execution. Your purchase conditions are only binding for us if and when we acknowledge this in writing for the particular contract. Technical and/or optical changes are subject for modification. Picture credits page 9 - freepik.com / graphictwister

# YOUR STRONG PARTNER

---

**DINSE - WE ARE YOUR STRONG PARTNER FOR THE ENTIRE WELDING PROCESS.**

## LIVE TO WELD.

For us, this is more than just a „fancy slogan“: our 150 employees have been passionate about welding for more than 60 years.

Would you like to know what DINSE passion looks like? There is, for example, our stockist who personally assembles each wear part for your order.

Or the production worker who manually bends your automatic torch to the desired angle. But also the colleague in the purchasing department who daily searches for the highest quality raw materials for our products and the constructing engineer who puts all his experience into developing new systems.

**IN SHORT:**  
FOR YOUR PERFECT  
WELDING RESULT  
WE GIVE OUR BEST  
EVERY DAY.

With locations throughout Germany and the world, we are one of the leading developers and manufacturers of systems for manual, robotic and automatic welding.



# YOUR EXPERTS

---

## SALES EUROPE / APPLICATION TECHNOLOGY / PROCESS TECHNOLOGY



**Philip Park**  
Sales Manager Europe  
Mobile +31-(0)651-815 391  
park@dinse.eu



**Adnan Özutku**  
Sales Manager Turkey  
Mobile +90-(0)541-396 19 73  
ozutku@dinse.eu



**Adam Bienias**  
Area Sales Manager Europe  
Mobile +48-(0)782-110 227  
bienias@dinse.eu



**Mariusz Małecki**  
Application Engineer  
Mobile +48-(0)609-931 123  
malecki@dinse.eu

## PRODUCT MANAGEMENT



**Jean-Marie Sandrock**  
Product Manager  
Mobile +49-(0)171-517 61 83  
sandrock@dinse.eu



**Sascha J. Lehfeld**  
Product Manager  
Mobile +49-(0)171-891 62 46  
lehfeld@dinse.eu



**Markus Müller**  
Manager Internal Sales  
Phone +49-(0)40-658 75-224  
mueller@dinse.eu



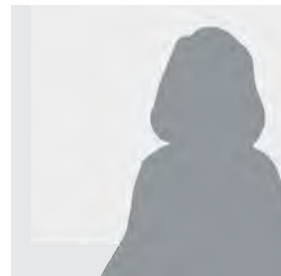
**Pawel Opolski**  
Internal Sales Europe  
Phone +49-(0)40-658 75-246  
opolski@dinse.eu

## INTERNAL SALES / MAIN OFFICE NORDERSTEDT

## SERVICE



**Carmen Adegá**  
Internal Sales Europe  
Phone +49-(0)40-658 75-233  
adega@dinse.eu



**Daniela Rudolf**  
Internal Sales International  
Phone +49-(0)40-658 75-226  
rudolf@dinse.eu



**Alexander Worel**  
Technical Internal Sales  
Phone +49-(0)40-658 75-227  
worel@dinse.eu



**Christoph Kwiatek**  
Team Lead Service  
Mobile +49-(0)171-234 70 00  
kwiatek@dinse.eu

# YOUR EXPERTS

---

## MANAGEMENT



**Torsten Lischke**

Managing Director  
Mobile +49-(0)171-588 31 31  
lischke@dinse.eu



**Torsten Scheer**

Sales and Marketing  
Authorised Officer  
Mobile +49-(0)171-518 03 83  
scheer@dinse.eu



**Ilka Grundheber**

Finance and Accounting  
Authorised Officer  
Phone +49-(0)40-658 75-290  
grundheber@dinse.eu



**Michael Jürgens**

Development  
Mobile +49-(0)160-833 51 01  
juergens@dinse.eu



**Markus Nolte**

Plant Manager  
Mobile +49-(0)171-585 27 75  
m.nolte@dinse.eu

# DINSE ACADEMY

---

**AT OUR TRAINING FACILITIES, THE WELDING TORCHES ARE NOT THE ONLY THING THAT HEATS UP – SO DOES YOUR CAREER:**

You can further your knowledge through seminars on various topics based around welding with DINSE.

Get a detailed view of the DINSE products in our „product experience world“ for manual and automated welding. Our team of instructors communicate theoretical basics to you in small groups at our training facilities.

Everything you learn will then be turned to practical use at our application centre. All participants can demonstrate what they are capable of at fully equipped manual workstations.



Catalogue DINSE Academy  
Art.-Nr. WF10172

Industrial robots are available for any training focusing on automation. Of course, every seminar is accompanied by our experts. There is always the opportunity to ask questions, even outside the box.

## **ARE YOU INTERESTED?**

You can find the entire training programme on the academy website at [www.dinse.eu/akademie](http://www.dinse.eu/akademie)

Or simply send an email to [akademie@dinse.eu](mailto:akademie@dinse.eu) to request your personal printed version.

Of course, we are also happy to answer any questions regarding our academy via telephone: +49-(0)40-658 75 – 224.



# PARTNERSHOP

---

THE DINSE PARTNERSHOP IS AN EXCLUSIVE ONLINE- FACTORY-  
OUTLET-STORE FOR OUR EXISTING CUSTOMERS. IN OUR  
PARTNERSHOP YOU CAN DISCOVER NUMEROUS OFFERS AT  
UNBEATABLE PRICES.

Selected articles, remaining stocks or outdated products are waiting for you - including huge discounts.

## HOW ABOUT A DIGITAL WINDOW SHOPPING-TOUR?

Register here: [www.dinse.eu/partnershop](http://www.dinse.eu/partnershop)



Our Partnership is exclusively reserved for our existing customers. Each customer is checked by us manually and approved according to certain criteria.

# CATALOGUES

---

Discover our whole service portfolio: From premium-consumable to the complete robotic system. In our catalogues you can find the right solution for your use case.

**DO YOU ALREADY KNOW, FOR EXAMPLE, OUR OTHER PRODUCT CATALOGUES OR THE MARKETING TOOLBOX?**



Product Catalogue  
MANUAL  
Art.-Nr. W2130



Product Catalogue  
AUTOMATION  
Art.-Nr. W2128



Product Catalogue  
MANUAL POWER SOURCES  
Art.-Nr. W2134



Product Catalogue  
LASER  
Art.-Nr. W2132



Marketing Toolbox  
Art.-Nr. WF10171

With the Marketing Toolbox we would like to support you as best as possible in your brand and product communication.

The catalogue contains all the tools you need to systematically, effectively and easily expand your marketing activities: From stickers and press releases to product flyers.

**YOU WANT TO TAKE A LOOK?**

All catalogues you can also find as download at:  
[www.dinse.eu/productcatalogue](http://www.dinse.eu/productcatalogue)



For notes:

---

---

---

---

---

---

---

---

---

---

---

---

---

---

---

---

---

---

---

---

---

---

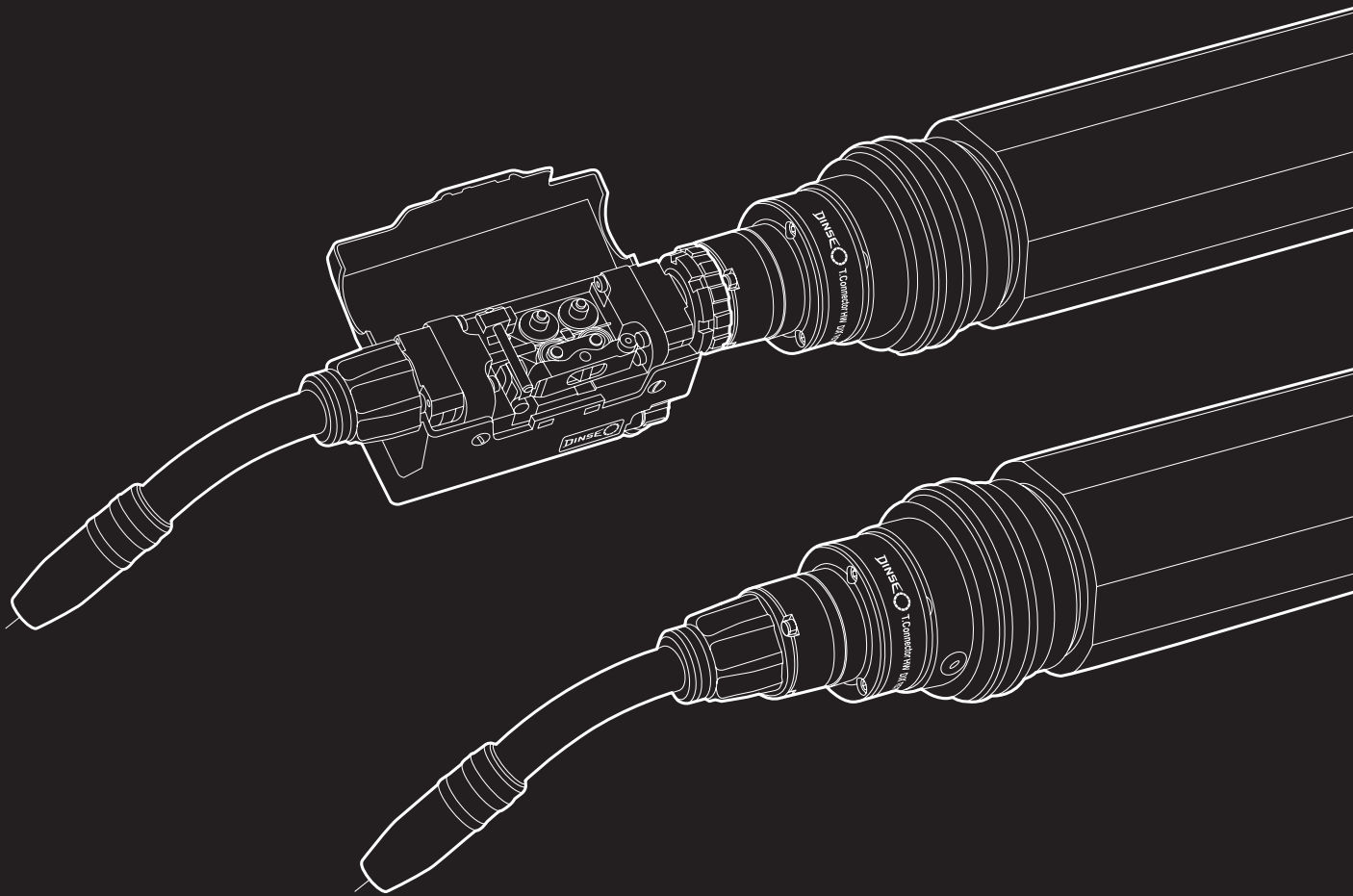
---

---

---



# HIGHEST PRECISION FOR HOLLOW-WRIST ROBOTS



## T.CONNECTOR HW & HWD

### Totally convincing:

- ▶ Perfect connection to the robot
- ▶ Easy installation
- ▶ Slim design and low weight
- ▶ Maximum flexibility through +/- 260° rotation
- ▶ Optional front drive: Single Feed, PUSH-PUSH and PUSH-PULL
- ▶ Optional wire brake available

**WITH SHOCK  
SENSOR**

# CONTENTS

<b>Welding cable couplings</b>	<b>12</b>
Sockets DIX BK xx	12
Plugs DIX SK xx	13
<b>Spare parts and wear parts welding cable couplings</b>	<b>14</b>
Sockets DIX BK xx	14
Plugs DIX SK xx	15
<b>Dimension sheet welding cable couplings</b>	<b>16</b>
<b>Accessories welding cable couplings</b>	<b>17</b>
Reducers DIX RSS xx	17
Cable joint sockets DIX KAB xx	17
Cable joint plugs DIX KAS xx	17
Coding plug DIX SEC	18
<b>Mounted couplings</b>	<b>19</b>
Mounting sockets DIX BE xx	19
Mounting plugs DIX xx	20
<b>Spare parts and wear parts mounted couplings</b>	<b>21</b>
Mounting socket DIX BEM 25 (ROT), DIX BE 50/70 (ROT), DIX BE 70/95	21
Mounting socket DIX BEK 50/70 GELB, DIX BEK 70/95 GELB, DIX BES 95/120	22
Mounting plugs DIX SEM 25, DIX SE 50/70	23
Mounting plugs DIX SE 70/95, DIX SES 95/120	24
<b>Dimension sheet mounted couplings</b>	<b>25</b>
<b>Electrode bracket</b>	<b>26</b>
DIX A 300	26
<b>Electrode bracket with cable and DINSE plug</b>	<b>27</b>
Electrode cable DIX EL.M	27
<b>Ground cables</b>	<b>28</b>
DIX BKK / SKK	28
DIX GL-x / 70	28
DIX GL-x / 95	28
DIX BKS / BKK	28
DIX GL.M	28
DIX BKK / KS	28
DIX SKS / KS	28



# Welding cable couplings

## Sockets DIX BK xx

### Benefits

- ▶ Perfect grip
- ▶ Extremely sturdy and long-lasting
- ▶ Reliable connection at high current loads
- ▶ Very good current transfer with original DINSE coupler
- ▶ Possible to adapt sleeve to all standard cable diameters
- ▶ Extremely stable with tongue & groove connection of sleeve and interior

BKM 25



BK 25  
BK 50  
BK 70



BKK 70  
BKK 95



### Application

- ▶ Welding cables in arc welding and related processes
- ▶ Applications where high currents are transported

BKS 95  
BKS 120



Technical data (DIN EN 60 974-12):	
<b>Sockets</b>	<b>BK xx</b>
Welding procedures:	Electrical arc welding
Protection class:	IP 3X
Ambient air temperature:	
- for welding	-10°C to +40°C
- during transport and storage	-20°C to +55°C
Relative humidity:	up to 90% at 20°C



Description	Nominal cross-section (mm <sup>2</sup> )	Current capacity max. (at 60% ED)	Part name	Part number
1 Socket, Mini	10-16	140A	DIX BKM 25	121100020
	16-25	190A		
2 Socket, standard	16-25	190A	DIX BK 25	121100025
Socket, standard	35-50	315A	DIX BK 50	121100050
Socket, standard	50-70	400A	DIX BK 70	121100070
3 Socket, Plus (with double clamping)	50-70	400A	DIX BKK 70	121110070
Socket, Plus (with double clamping)	70-95	500A	DIX BKK 95	121110090
4 Socket, Special (with double clamping)	70-95	500A	DIX BKS 95	121120090
Socket, Special (with double clamping)	95-120	590A	DIX BKS 120	121120120

- ▶ Recommended nominal cross-sections (mm<sup>2</sup>) of welding cables from CU dependent on welding current and cable length.



# Welding cable couplings

## Plugs DIX SK xx



### Benefits

- ▶ Perfect grip
- ▶ Extremely sturdy and long-lasting
- ▶ Reliable connection at high current loads
- ▶ Very good current transfer with original DINSE coupler
- ▶ Possible to adapt sleeve to all standard cable diameters
- ▶ Extremely stable with tongue & groove connection of sleeve and interior

SKM 25  
SKM 25 ROT



SK 25  
SK 50  
SK 70  
SK 70 ROT



SKK 70  
SKK 95



### Application

- ▶ Welding cables in arc welding and related processes
- ▶ Applications where high currents are transported

SKS 95  
SKS 120



### Technical data (DIN EN 60 974-12):

<b>Plugs</b>	<b>SK xx</b>
Welding procedures:	Electric arc welding
Protection class:	IP 3X
Ambient air temperature:	
- for welding	-10°C to +40°C
- during transport and storage	-20°C to +55°C
Relative humidity:	up to 90% at 20°C



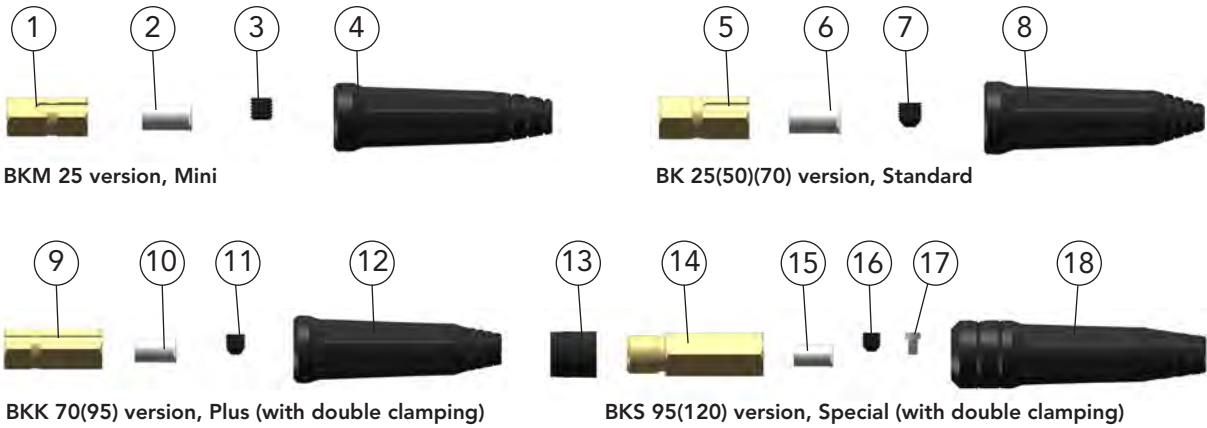
	Description	Nominal cross-section (mm <sup>2</sup> )	Current capacity max. (at 60% ED)	Part name	Part number
1	Plug, Mini	10-16 / 16-25	140A / 190A	DIX SKM 25	122100020
	Plug, Mini	10-16 / 16-25	140A / 190A	DIX SKM 25 ROT	122100022
2	Plug, Standard	16-25	190A	DIX SK 25	122100025
	Plug, Standard	35-50	315A	DIX SK 50	122100050
	Plugs Standard	50-70	400A	DIX SK 70	122100070
	Plugs Standard	50-70	400A	DIX SK 70 ROT	122100072
3	Plug, Plus (with double clamping)	50-70	400A	DIX SKK 70	122110070
	Plug, Plus (with double clamping)	70-95	500A	DIX SKK 95	122110090
4	Plug, Special (with double clamping)	70-95	500A	DIX SKS 95	122120090
	Plug, Special (with double clamping)	95-120	590A	DIX SKS 120	122120120

- ▶ Recommended nominal cross-sections (mm<sup>2</sup>) of welding cables from CU dependent on welding current and cable length.



# Spare parts and wear parts welding cable couplings

## Sockets DIX BK xx



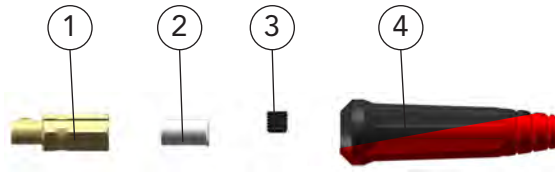
Description	Dimension	Part name	Part number
<b>BKM version, Mini:</b>			
1 Interior part		DIX BKM 25-01	129131001
2 Clamping sleeve		DIX 8/15	199200015
3 Screw pin	M8x8 mm		199100011
4 Rubber sleeve		DIX BKM-02	129211021
<b>BK version, Standard:</b>			
5 Interior part		DIX BK 25-01	129131002
Interior part, not shown		DIX BK 50-01	129131003
Interior part, not shown		DIX BK 70-01	129131004
6 Clamping sleeve, for BK 25		DIX 10/25	199200020
Clamping sleeve, for BK 50, not shown		DIX 35/50	199200050
Clamping sleeve, for BK 70, not shown		DIX 50/70	199200070
7 Screw pin, for BK 25	M8x1x10 mm		199100009
Screw pin, for BK 50, not shown	M10x10 mm		199100010
Screw pin, for BK 70, (pos. 11)	M12x12 mm		199100018
8 Rubber sleeve		DIX BK-02	129211072
<b>BKK version, Plus (with double clamping):</b>			
9 Interior part		DIX BKK 70-01	129131005
Interior part, not shown		DIX BKK 95-01	129131006
10 Clamping sleeve, for BKK 70		DIX 50/70 KK	199201070
Clamping sleeve, for BKK 95, not shown		DIX 70/95 KK	199201090
11 Screw pin, for BKK 70 and BKK 95	M12x12 mm		199100018
12 Rubber sleeve		DIX BKK-02	129211191
<b>BKS version, Special (with double clamping):</b>			
13 Additional sleeve		DIX BEC 101	65904010114
14 Interior part		DIX BKS 95-1	129111290
Interior part, not shown		DIX BKS 120-1	129111320
15 Clamping sleeve, for BKS 95		DIX 70/95 KK	199201090
Clamping sleeve, for BKS 120, not shown		DIX 95/120 KK	199201120
16 Screw pin, for BKS 95	M12x12 mm		199100018
Screw pin, for BKS 120, not shown	M16x12 mm		199100016
17 Cylinder screw		DIX 13-2	629130000
18 Rubber sleeve		DIX BKS-02	129211321



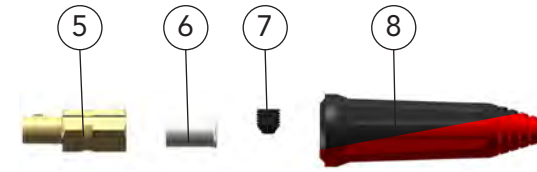
# Spare parts and wear parts welding cable couplings



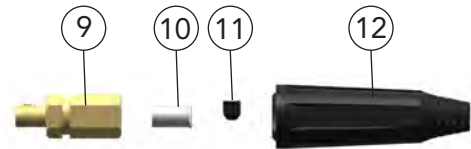
## Plugs DIX SK xx



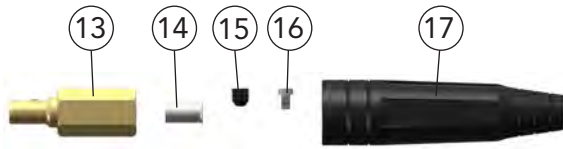
SKM 25 version, Mini



SK 25(50)(70) version, Standard



SKK 70(95) version, Plus (with double clamping)



SKS 95(120) version, Special (with double clamping)

	Description	Dimension	Part name	Part number
<b>SKM version, Mini</b>				
1	Interior part		DIX SKM 25-01	129131007
2	Clamping sleeve		DIX 8/15	199200015
3	Screw pin	M8x8 mm		199100011
4	Rubber sleeve		DIX SKM-02	129221021
	Rubber sleeve		DIX SKM-02 rot	129221022
<b>SK version, Standard</b>				
5	Interior part		DIX SK 25-01	129131008
	Interior part, not shown		DIX SK 50-01	129131009
	Interior part, not shown		DIX SK 70-01	129131010
6	Clamping sleeve, for SK 25		DIX 10/25	199200020
	Clamping sleeve, for SK 50, not shown		DIX 35/50	199200050
	Clamping sleeve, for SK 70, not shown		DIX 50/70	199200070
7	Screw pin, for SK 25	M8x8 mm		199100011
	Screw pin, for SK 50, not shown	M10x10 mm		199100010
	Screw pin, for SK 70, not shown	M12x12 mm		199100018
8	Rubber sleeve		DIX SK-02	129221072
	Rubber sleeve		DIX SK-02 rot	129221073
<b>SKK version, Plus (with double clamping)</b>				
9	Interior part		DIX SKK 70-01	129131011
	Interior part, not shown		DIX SKK 95-01	129131012
10	Clamping sleeve, for SKK 70		DIX 50/70 KK	199201070
	Clamping sleeve, for SKK 95, not shown		DIX 70/95 KK	199201090
11	Screw pin, for SKK 70 and SKK 95	M12x12 mm		199100018
12	Rubber sleeve		DIX SKK-02	129221191
<b>SKS version, Special (with double clamping)</b>				
13	Interior part		DIX SKS 95-1	129121290
	Interior part, not shown		DIX SKS 120-1	129121320
14	Clamping sleeve, for SKS 95		DIX 70/95 KK	199201090
	Clamping sleeve, for BKS 120, not shown		DIX 95/120 KK	199201120
15	Screw pin, for SKS 95	M12x12 mm		199100018
	Screw pin, for BKS 120, not shown	M16x12 mm		199100016
16	Cylinder screw		DIX 13-2	629130000
17	Rubber sleeve		DIX SKS-02	129221321

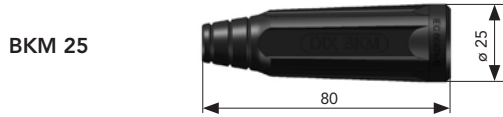


# Dimension sheet welding cable couplings

## Sockets BK xx, plugs SK xx

**Sockets:**

**Plugs:**



①



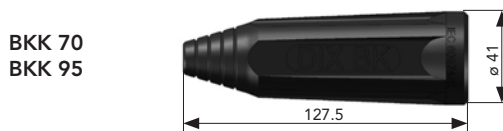
**SKM 25  
SKM 25 ROT**



②



**SK 25  
SK 50  
SK 70  
SK 70 ROT**



③



**SKK 70  
SKK 95**



④



**SKS 95  
SKS 120**

Sockets	Plugs
1 DIX BKM 25	DIX SKM 25 DIX SKM 25 ROT
2 DIX BK 25 DIX BK 50 DIX BK 70	DIX SK 25 DIX SK 50 DIX SK 70 DIX SK 70 ROT
3 DIX BKK 70 DIX BKK 95	DIX SKK 70 DIX SKK 95
4 DIX BKS 95 DIX BKS 120	DIX SKS 95 DIX SKS 120





# Accessories welding cable couplings

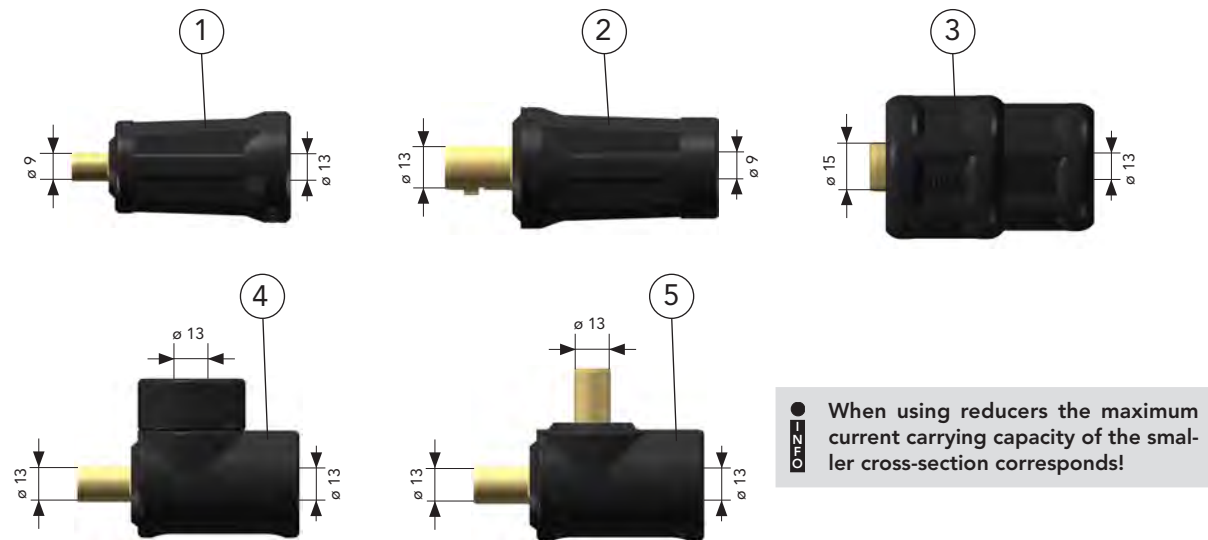


Reducers DIX RSS xx

Cable joint sockets DIX KAB xx

Cable joint plugs DIX KAS xx

## Sample applications



**NOTE** When using reducers the maximum current carrying capacity of the smaller cross-section corresponds!

Description	Application	Part name	Part number
1 Reducer	BKM - SK	DIX RSS 50/25	124305025
2 Reducer	BK - SKM	DIX RSS S50/B25	124325025
3 Reducer	BKS - SKK	DIX RSS 95/120	124300000
4 Cable joint socket For: SK, SKK, BK, BKK		DIX KAB 70/95	123100070
5 Cable joint plug For: SK, SKK, BK, BKK		DIX KAS 70/95	123200070



## Coding plug DIX SEC

The DINSE G.m.b.H. has developed the coding plug DIX SEC, which is designed to prevent polarity reversal of the welding cables at the power source.

The coding plug turns a DINSE socket into a DINSE plug.

The coding plug DIX SEC can be mounted on any power source equipped with DINSE sockets. After correct installation, the DIX SEC coding plug can no longer be removed by hand.

The coupling plug of the ground line only has to be replaced by a welding cable coupling of the type DIX BK or DIX BKK.

Now only a correctly polarized connection is possible.

Before the assembly



After the assembly



### Benefits

- ▶ Reverse polarity protection at the welding power source
- ▶ Extremely sturdy and long-lasting
- ▶ Reliable connection at high current loads
- ▶ Very good current transfer with original DINSE coupler
- ▶ Easy assembly and optimal fixture

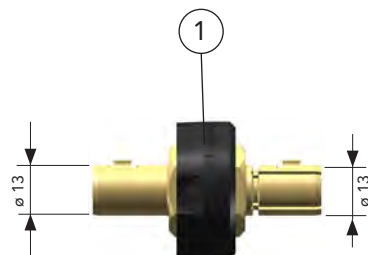
### Application

- ▶ Welding power sources in arc welding and related processes



### Technical data (DIN EN 60 974-12):

<b>Coding plug</b>	<b>SEC</b>
Welding procedures:	Electrical arc welding
Protection class:	IP 3X
Ambient air temperature:	
- for welding	-10°C to +40°C
- during transport and storage	-20°C to +55°C
Relative humidity:	up to 90% at 20°C



Description	Application	Part name	Part number
1 Coding plug		DIX SEC	122130070



# Mounted couplings

## Mounting sockets DIX BE xx

### Benefits

- ▶ Extremely sturdy and long-lasting
- ▶ Reliable connection at high current loads
- ▶ Very good current transfer with original DINSE coupler
- ▶ Easy assembly and optimal fixture

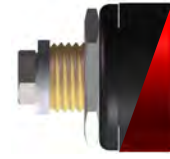
### Application

- ▶ Welding cables in arc welding and related processes
- ▶ Applications where high currents are transported

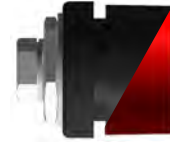
### Technical data (DIN EN 60 974-12):

<b>Sockets</b>	BEM 25 BE 50/70 BE 70/95 BEK 50/70 GELB BEK 70/95 GELB BES 95/120
Protection class:	IP 3X
Ambient air temperature:	
- for welding	-10°C to +40°C
- during transport and storage	-20°C to +55°C
Relative humidity:	up to 90% at 20°C

BEM 25  
BEM 25 ROT



BE 50/70  
BE 50/70 ROT



BE 70/95



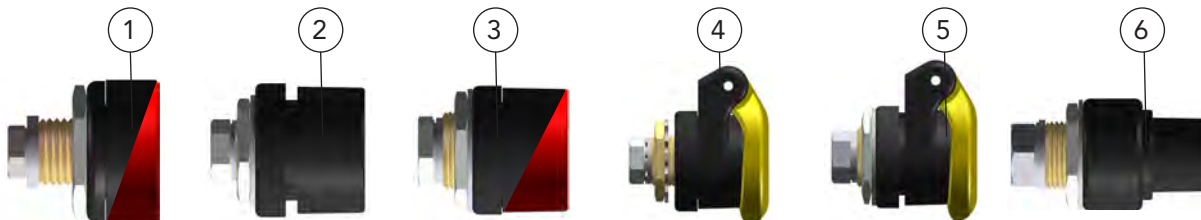
BEK 50/70 GELB



BEK 70/95 GELB



BES 95/120



	Description	Nominal cross-section (mm <sup>2</sup> )	Connection screw	Current rating (A) at 60% ED	Part name	Part number
1	Mounting socket Mini	10-16 / 16-25	M8	140A / 190A	DIX BEM 25	121300020
	Mounting socket Mini	10-16 / 16-25	M8	140A / 190A	DIX BEM 25 ROT	121300023
2	Mounting socket Standard	50-70	M10	400A	DIX BE 50/70	121300050
3	Mounting socket Standard	70-95	M12	500A	DIX BE 70/95	121300070
	Mounting socket red	50-70	M10	400A	DIX BE 50/70 ROT	121300052
4	Mounting socket Plus with cover cap	50-70	M10	400A	DIX BEK 50/70 GELB	121330050
5	Mounting socket Plus with cover cap	70-95	M12	500A	DIX BEK 70/95 GELB	121330070
6	Mounting socket Special	95-120	M16	590A	DIX BES 95/120	121300120

- ▶ Recommended nominal cross-sections (mm<sup>2</sup>) of welding cables from CU dependent on welding current and cable length.



# Mounted couplings

## Mounting plugs DIX xx

### Benefits

- ▶ Extremely sturdy and long-lasting
- ▶ Reliable connection at high current loads
- ▶ Very good current transfer with original DINSE coupler
- ▶ Easy assembly and optimal fixture

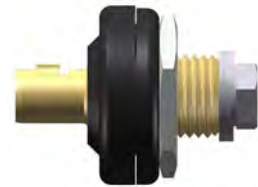
### Application

- ▶ Welding cables in arc welding and related processes
- ▶ Applications where high currents are transported

### Technical data (DIN EN 60 974-12):

<b>Plugs</b>	<b>SEM 25</b> <b>SE 50/70</b> <b>SE 70/95</b> <b>SES 95/120</b>
Welding procedures:	Electrical arc welding
Protection class:	IP 3X
Ambient air temperature:	
- for welding	-10°C to +40°C
- during transport and storage	-20°C to +55°C
Relative humidity:	up to 90% at 20°C

SEM 25



SE 50/70



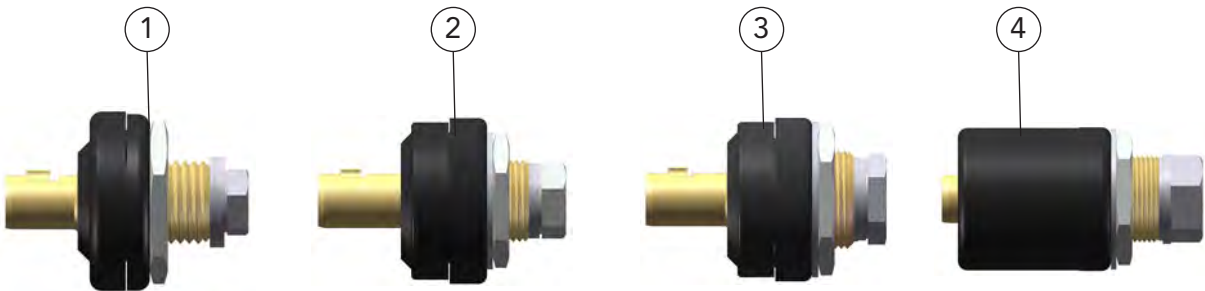
SE 70/95



SES 95/120



Welding cable couplings



	Description	Nominal cross-section (mm <sup>2</sup> )	Connection screw	Current rating (A) at 60% ED	Part name	Part number
1	Mounting plug Mini	10-25 / 16-25	M8	140A / 190A	DIX SEM 25	122300020
2	Mounting plug Standard)	50-70	M10	400A	DIX SE 50/70	122300050
3	Plug, Standard	70-95	M12	500A	DIX SE 70/95	122300070
4	Plug, Special	95-120	M16	590A	DIX SES 95/120	122320120

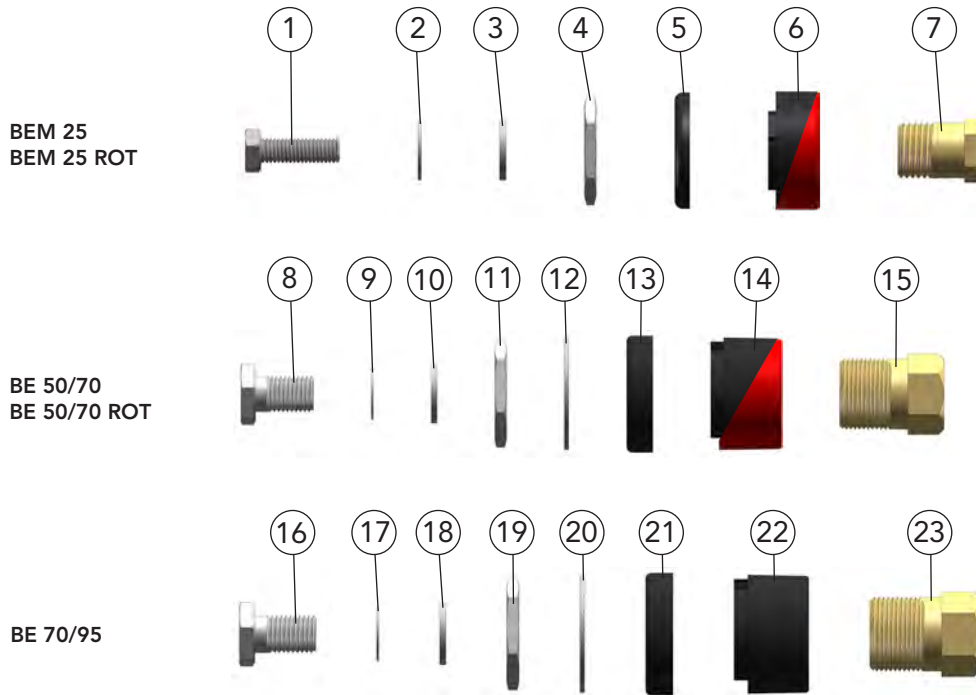
- ▶ Recommended nominal cross-sections (mm<sup>2</sup>) of welding cables from CU dependent on welding current and cable length.



# Spare parts and wear parts mounted couplings



## Mounting socket DIX BEM 25 (ROT), DIX BE 50/70 (ROT), DIX BE 70/95

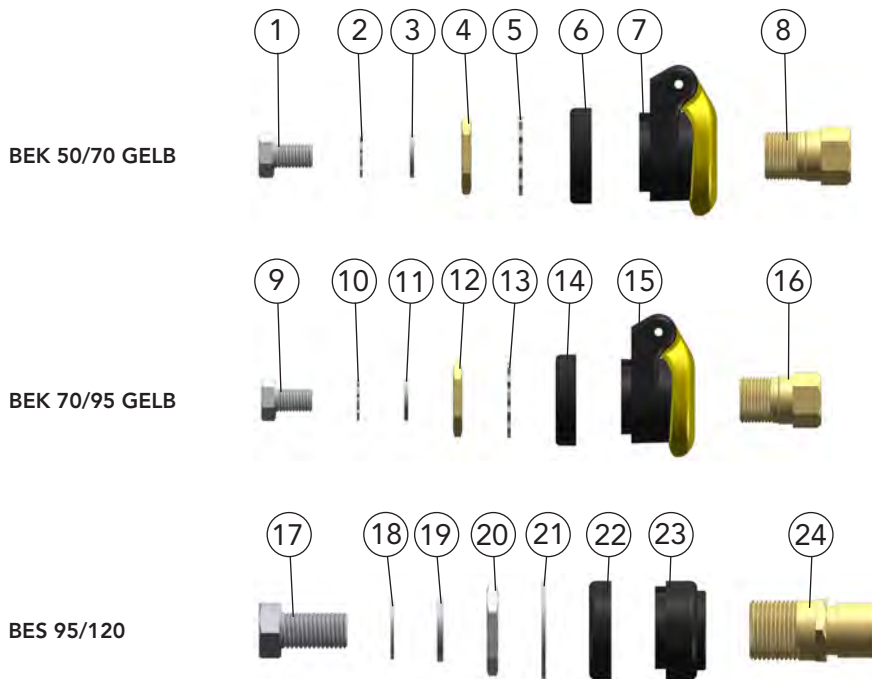


	Description	Terminal screw	Part name	Part number
<b>Version BEM 25 (M8), Mini</b>				
1	Screw, M 8x1x14			12961302013
2	Serrated washer, J 8.4			12961302012
3	Washer 8.4			12961302011
4	Nut		DIX B/SEM 25-4	129413020
5	Compression ring		DIX B/SEM 25-3	129313020
6	ISO-shell		DIX BEM 25-2	129213020
	ISO-shell		DIX BEM 25-2 rot	129213022
7	Interior part		DIX BEM 25-1	129113020
<b>Version BE 50/70 (M10), standard</b>				
8	Screw, M 10x16			12961305013
9	Serrated washer, A 10.5			12961305012
10	Washer 10.5			12961305011
11	Nut		DIX B/SE 50/70-4	129413050
12	Serrated washer		DIX B/SE 50/70-5	129513050
13	Compression ring		DIX B/SE 50/70-3	129313050
14	ISO-shell		DIX BE 50/70-2	129213050
	ISO-shell		DIX BE 50/70-2 rot	129213051
15	Interior part		DIX BE 50-1	129113050
<b>Version BE 70/95 (M12), standard</b>				
16	Screw, M 12x1.5x20			12961307013
17	Serrated washer, J 12.5			12961307012
18	Washer 13			12961307011
19	Nut		DIX B/SE 70/95-4	129413070
20	Serrated washer		DIX B/SE 70/95-5	129513070
21	Compression ring		DIX B/SE 70/95-3	129313070
22	ISO-shell		DIX BE 70/95-2	129213070
23	Interior part		DIX BE 70/95-1	129113070



# Spare parts and wear parts mounted couplings

## Mounting socket DIX BEK 50/70 GELB, DIX BEK 70/95 GELB, DIX BES 95/120

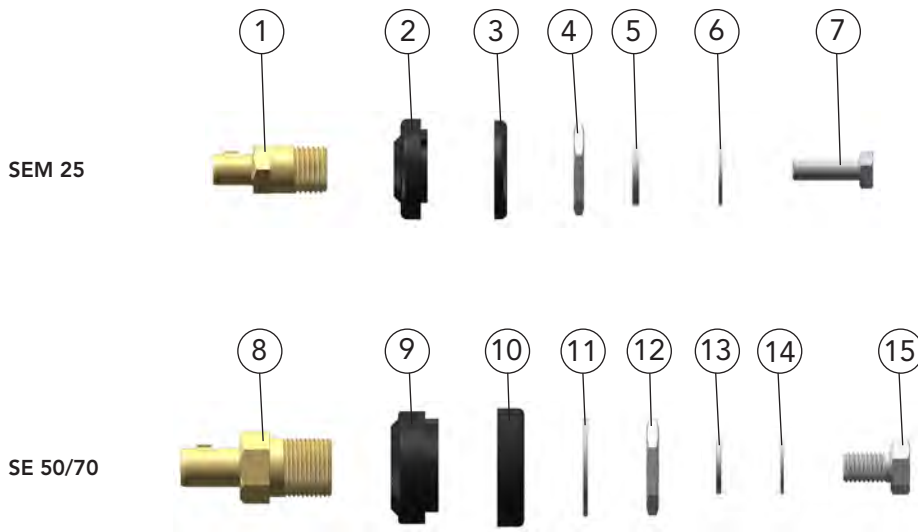


Description	Terminal screw	Part name	Part number
<b>Version BEK 50/70 GELB (M10), Plus (with cover cap)</b>			
1	Screw, M10x16		12961305013
2	Serrated washer	DIX B/SE 50/70-5	129513050
3	Washer, 10.5		12961305011
4	Nut	DIX B/SE 50/70-4	129413050
5	Serrated washer A 10.5		12961305012
6	Compression ring	DIX B/SE 50/70-3	129313050
7	Cover	DIX BAK 50/70	12931305011
8	Interior part	DIX BE 50-1	129113050
<b>Version BEK 70/95 GELB (M12), Plus (with cover cap)</b>			
9	Screw, M12x1.5x20		12961307013
10	Serrated washer	DIX B/SE 70/95-5	129513070
11	Washer, 13		12961307011
12	Nut	DIX B/SE 70/95-4	129413070
13	Serrated washer J 12.5		12961307012
14	Compression ring	DIX B/SE 70/95-3	129313070
15	Cover	DIX BAK 70/95	12931307011
16	Interior part	DIX BE 70/95-1	129113070
<b>Version BES 95/120 (M16), Special</b>			
17	Screw, M16x25		12961312013
18	Serrated washer J 17		12961312012
19	Washer, 17		12961312011
20	Nut	DIX B/SES 95/120-4	129413120
21	Serrated washer	DIX B/SES 95/120-5	129513120
22	Compression ring	DIX BES 95/120-3	129313120
23	ISO-shell	DIX BES 95/120-2	129213320
24	Interior part	DIX BES 95/120-1	129113320
25	Additional sleeve, not shown	DIX BEC 101	65904010114

# Spare parts and wear parts mounted couplings



## Mounting plugs DIX SEM 25, DIX SE 50/70



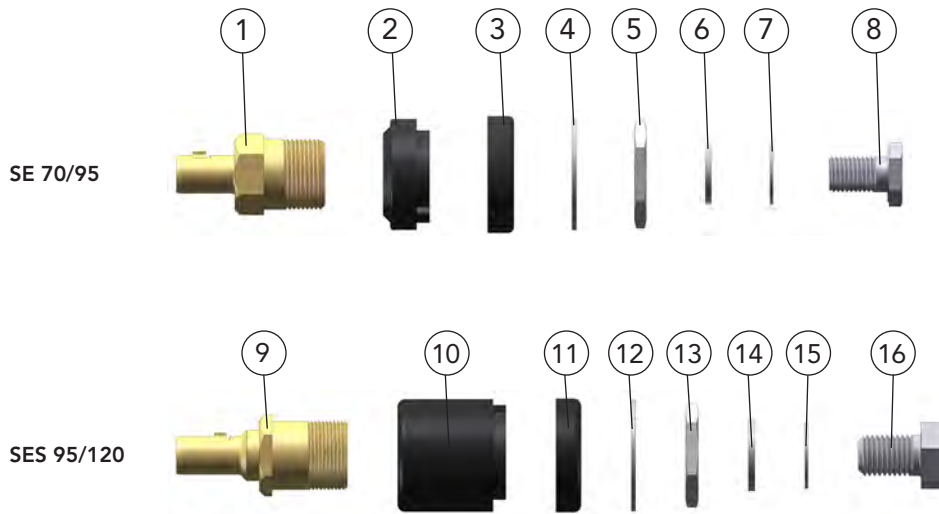
	Description	Terminal screw	Part name	Part number
<b>Version SEM 25 (M8), Mini</b>				
1	Interior part		DIX SEM 25-1	129123020
2	ISO-shell		DIX SEM 25-2	129223020
3	Compression ring		DIX B/SEM 25-3	129313020
4	Nut		DIX B/SEM 25-4	129413020
5	Washer 8.4			12961302011
6	Serrated washer J 8.4			12961302012
7	Screw M8x14			12961302013
<b>Version SE 50/70 (M10), Standard</b>				
8	Interior part		DIX SE 50/70-1	129123050
9	ISO-shell		DIX SE 50/70-2	129223050
10	Compression ring		DIX B/SE 50/70-3	129313050
11	Serrated washer		DIX B/SE 50/70-5	129513050
12	Nut		DIX B/SE 50/70-4	129413050
13	Washer 10.5			12961305011
14	Serrated washer A 10.5			12961305012
15	Screw, M10x16			12961305013

Welding cable couplings



# Spare parts and wear parts mounted couplings

## Mounting plugs DIX SE 70/95, DIX SES 95/120

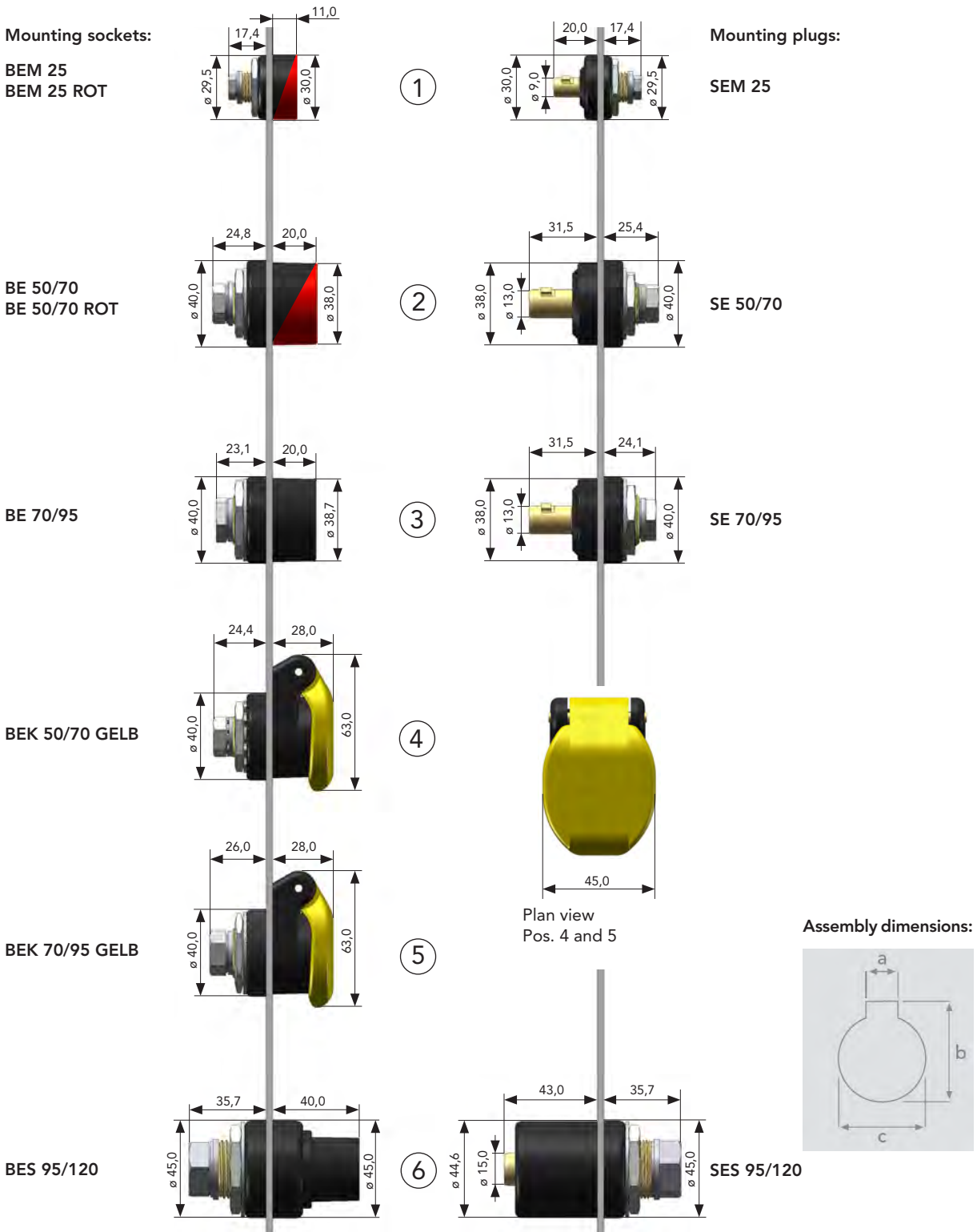


Description	Terminal screw	Part name	Part number
<b>Version SE 70/95 (M12), Standard</b>			
1		DIX SE 70/95-1	129123070
2		DIX SE 70/95-2	129223070
3		DIX B/SE 70/95-3	129313070
4		DIX B/SE 70/95-5	129513070
5		DIX B/SE 70/95-4	129413070
6			12961307011
7			12961307012
8			12961307013
<b>Version BES 95/120 (M16), Special</b>			
9		DIX SES 95/120-1	129123320
10		DIX SES 95/120-3	12922332013
11		DIX BES 95/120-3	129313120
12		DIX B/SES 95/120-5	129513120
13		DIX B/SES 95/120-4	129413120
14			12961312011
15			12961312012
16			12961312013



# Dimension sheet mounted couplings

## Mounting sockets DIX BE xx, Mounting plugs DIX SE xx



	Mounting sockets	Mounting plugs	a (in mm)	b (in mm)	c (in mm)
1	DIX BEM 25 (ROT)	DIX SKM 25	6.3	22.7	20.2
2	DIX BE 50/70 (ROT)	DIX SE 50/70	6.3	33.2	30.2
3	DIX BE 70/95	DIX SE 70/95	6.3	33.2	30.2
4	DIX BEK 50/70 GELB	-	6.3	33.2	30.2
5	DIX BEK 70/95 GELB	-	6.3	33.2	30.2
6	DIX BES 95/120	DIX SES 95/120	6.3	38.2	35.2



# Electrode bracket DIX A 300

Technical data (IEC 60 974-11):	
<b>Electrode bracket</b>	<b>A 300</b>
Welding procedures:	Covered electrode welding
Electrode diameter:	ø 2.0 - 6 mm
Welding current:	
duty cycle	300A
- at 60%	400A
- at 35%	
Cable junction: (Nominal cross-section)	25 - 70 mm <sup>2</sup> CU
Weight:	425 g



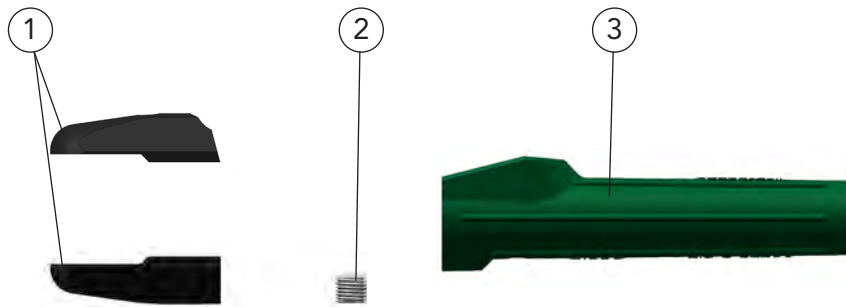
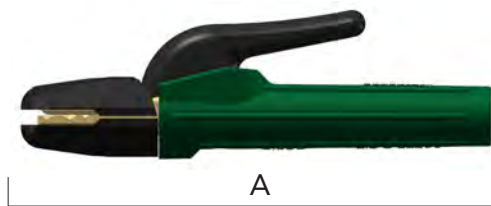
Electrode bracket A 300 (application sample)

### Benefits

- ▶ No soldering
- ▶ No cable lug
- ▶ Fast and safe assembly
- ▶ Equipped with DINSE terminal connection
- ▶ Assembly- and repair-friendly

### Application

- ▶ For arc welding equipment
- ▶ Electrode support for highest loads during on-going welding work



Description	Part name	Part number
A Electrode bracket	DIX A 300	1110013001

### Replacements and spare parts

1	Insulation caps, with attachments	DIX A 300-4 SET	1190413001
2	Screw	DIX A 300-5	1190513001
3	Handhold	DIX A 300-6	1190613001
	Clamping sleeve, without fig.	DIX 50/70	199200070

- ▶ Recommended nominal cross-sections (mm<sup>2</sup>) of welding cables from CU dependent on welding current and cable length.



# Electrode bracket with cable and DINSE plug

## Electrode cable DIX EL.M



Technical data (IEC 60 974-11):	
Electrode cable	DIX EL.M 16-4
Electrode cable	DIX EL.M 25-4
With DINSE plug, Electroden cable and Electrode bracket DIX A300 mounted	
Welding procedures:	Covered electrode welding
Electrode diameter:	ø 2.0 - 6.3 mm
Welding current:	
duty cycle	
- at 60%	140A / 190A
- at 35%	150A / 210A
Cable junction:	16 mm <sup>2</sup> CU / 25 mm <sup>2</sup> CU
(Nominal cross-section)	



**A** Electrode cable DIX EL.M 16-4

### Benefits

- ▶ Immediately usable
- ▶ Fitting with DINSE plug  
DIX SKM 25 for DIX EL.M 16-4  
DIX SK 25 for DIX EL.M 25-4
- ▶ Assembly- and repair-friendly

### Application

- ▶ For arc welding equipment
- ▶ Electrode support for highest loads during on-going welding work



**B** Electrode cable DIX EL.M 25-4

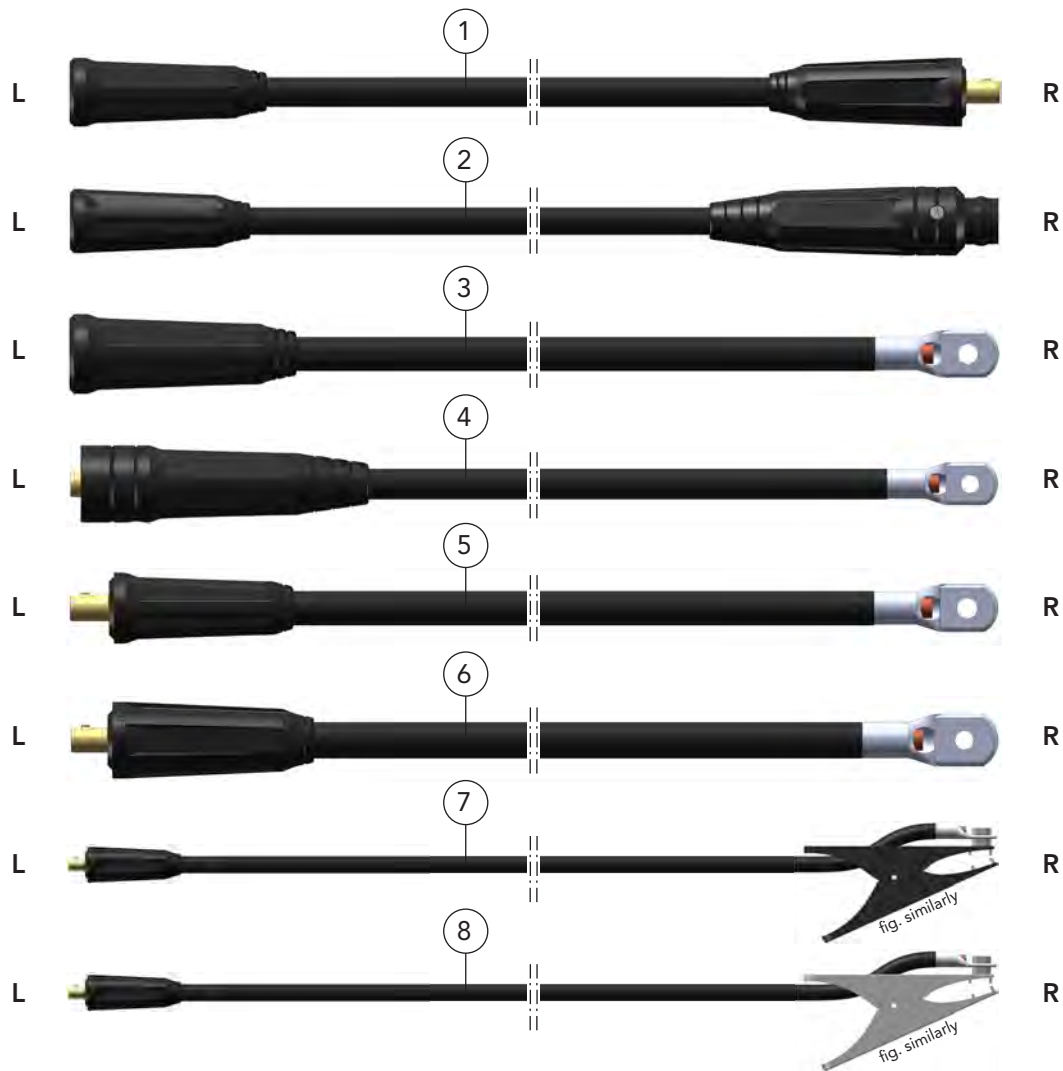
Description	Nominal cross-sections	Part name	Part number
A Electrode cable For manual power source: DIX GO 1206.M / 1106.M C	16 mm <sup>2</sup>	DIX 16-4	7420080000
B Electrode cable For manual power source: DIX GO 1306.M / 1206.M C	25 mm <sup>2</sup>	DIX 25-4	7420080001

- ▶ Recommended nominal cross-sections (mm<sup>2</sup>) of welding cables from CU dependent on welding current and cable length.



## Ground cables

DIX BKK / SKK , DIX BKS / BKK , DIX BKK / KS , DIX SKS / KS  
DIX GL-x / 70 , DIX GL-x / 95 , DIX GL.M



	Description	Length x cross section	Connection L / R	Part name	Part number	
1	Ground cable	9,0 m x 70 mm <sup>2</sup>	BKK 70 / SKK 70	DIX BKK / SKK 70-9	629900294	
	Ground cable	11,5 m x 70 mm <sup>2</sup>	BKK 70 / SKK 70	DIX BKK / SKK 70-11,5	629900295	
	Ground cable	15,0 m x 70 mm <sup>2</sup>	BKK 70 / SKK 70	DIX BKK / SKK 70-15	629900300	
2	Ground cable	15,0 m x 70 mm <sup>2</sup>	BKK 70 / BKS 95-54*	DIX BKS / BKK 70-15 / 54	629900341	
	Ground cable	13,0 m x 70 mm <sup>2</sup>	BKK 70 / Cable lug M10	DIX BKK / KS 10mm-13	629900342	
	Ground cable	1,5 m x 70 mm <sup>2</sup>	SKS 95 / Cable lug M10	DIX SKS / KS 10mm-1,5	629900343	
	Ground cable	1,5 m x 70 mm <sup>2</sup>	SK 70 / Cable lug M10	DIX GL-1,5-70	7410087141	
	Ground cable	5,0 m x 70 mm <sup>2</sup>	SK 70 / Cable lug M10	DIX GL-5/70	7410087005	
	Ground cable	10,0 m x 70 mm <sup>2</sup>	SK 70 / Cable lug M10	DIX GL-10/70	7410087010	
	Ground cable	13,0 m x 70 mm <sup>2</sup>	SK 70 / Cable lug M10	DIX GL-13/70	7410087145	
	Ground cable	18,0 m x 70 mm <sup>2</sup>	SK 70 / Cable lug M10	DIX GL-18/70	7410087140	
	6	Ground cable	5,0 m x 95 mm <sup>2</sup>	SKK 95 / Cable lug M10	DIX GL-5/95	7410089505
		Ground cable	10,0 m x 95 mm <sup>2</sup>	SKK 95 / Cable lug M10	DIX GL-10/95	7410089510
Ground cable		25,0 m x 95 mm <sup>2</sup>	SKK 95 / Cable lug M10	DIX GL-25/95	7410089525	
7	Ground cable	5,0 m x 95 mm <sup>2</sup>	SKK 95 / Ground terminal	DIX GL-5/95/1	7410189505	
8	Ground cable	4,0 m x 16 mm <sup>2</sup>	SKM 25 / Metal sheet pliers 200A	DIX GL.M 16-4	7420070000	
	Ground cable	4,0 m x 25 mm <sup>2</sup>	SK 25 / Metal sheet pliers 300A	DIX GL.M 25-4	7420070001	
	Ground cable	5,0 m x 35 mm <sup>2</sup>	SK 50 / Metal sheet pliers 400A	DIX GL.M 35-5	7420070002	
	Ground cable	5,0m x 50 mm <sup>2</sup>	SK 50 / Metal sheet pliers 400A	DIX GL.M 50-5	7420070003	
	Ground cable	5,0 m x 70 mm <sup>2</sup>	SK 70 / Metal sheet pliers 500A	DIX GL.M 70-5	7420070004	
	Ground cable	5,0 m x 95 mm <sup>2</sup>	SKK 95 / Metal sheet pliers 600A	DIX GL.M 95-5	7420070005	



# Index

<b>A</b>	
A 300	26
<b>B</b>	
BE 50/70	19
BE 50/70 ROT	19
BE 70/95	19
BEK 50/70 GELB	19
BEK 70/95 GELB	19
BEM 25	19
BEM 25 ROT	19
BES 95/120	19
BK 25	12
BK 50	12
BK 70	12
BKK 70	12
BKK 95	12
BKM 25	12
BKS 95	12
BKS 120	12
<b>C</b>	
Cable joint plugs	17
Cable joint sockets	17
Coding plug DIX SEC	18
<b>D</b>	
Dimension sheet mounted couplings	25
Dimension sheet welding cable couplings	16
<b>E</b>	
Electrode bracket	26
A 300	26
Electrode cable	27
EL.M	27
<b>G</b>	
Ground cables	28
<b>K</b>	
KAB 70/95	17
KAS 70/95	17
<b>M</b>	
Mounting plugs	20–21
Mounting sockets	19–20
<b>R</b>	
Reducers	17, 18
RSS 50/25	17
RSS 95/120	17
RSS S50/B25	17
<b>S</b>	
SE 50/70	20
SE 70/95	20
SEM 25	20
SES 95/120	20
SK 25	13
SK 50	13
SK 70	13
SK 70 ROT	13
SKK 70	13
SKK 95	13
SKM 25	13
SKM 25 ROT	13
SKS 95	13
SKS 120	13
<b>W</b>	
Welding cable couplings	12–17

## Update index

Version no.	Change
2021/45	<b>New products</b> Cable coupling SKM 25 ROT, SK 70 ROT; mounting socket BEM 25 ROT, BE 50/70 ROT; Ground cables; Electrode bracket A 300; Electrode bracket with cable ELM

For notes:

---

---

---

---

---

---

---

---

---

---

---

---

---

---

---

---

---

---

---

---

---

---

---



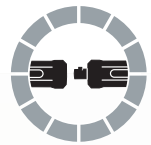
DINSE G.m.b.H.  
Niewisch 9 · 22848 Norderstedt · Germany

Tel: +49-(0)40 - 658 75 - 0  
Fax: +49-(0)40 - 658 75 - 200

E-Mail: info@dinse.eu  
Internet: www.dinse.eu



Your specialized dealer:



2022

